

Westfield Sale Opportunity

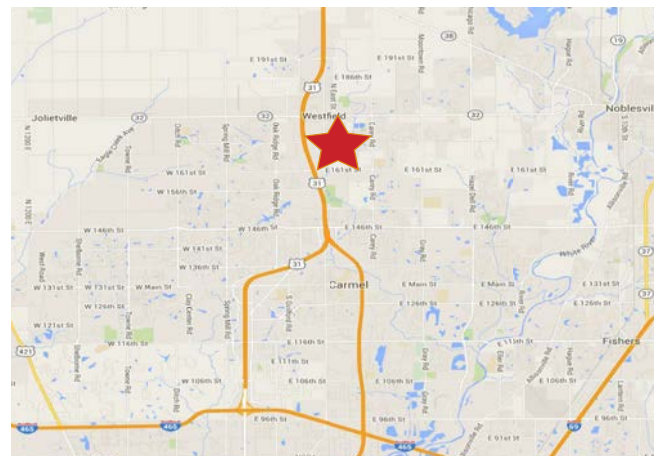
1.983 Acres

518 W Park St, Westfield, IN



Property Highlights:

- Located in the new Westfield Grand Junction gateway
- Excellent development opportunity within planned city development in area
- Last remaining corner on the gateway
- Close to Grand Park Sports Complex, which drew in 1.5 million visitors in 2015



Demographics	1 mile	3 mile	5 mile
Estimated Population	7,548	30,874	86,067
Estimated Households	2,665	10,873	31,212
Est. Avg. HH Income	\$94,253	\$101,560	\$114,251



For more information contact:
 Wayne O'Hara, CLS
 317-472-1800
 wohara@veritasrealty.com



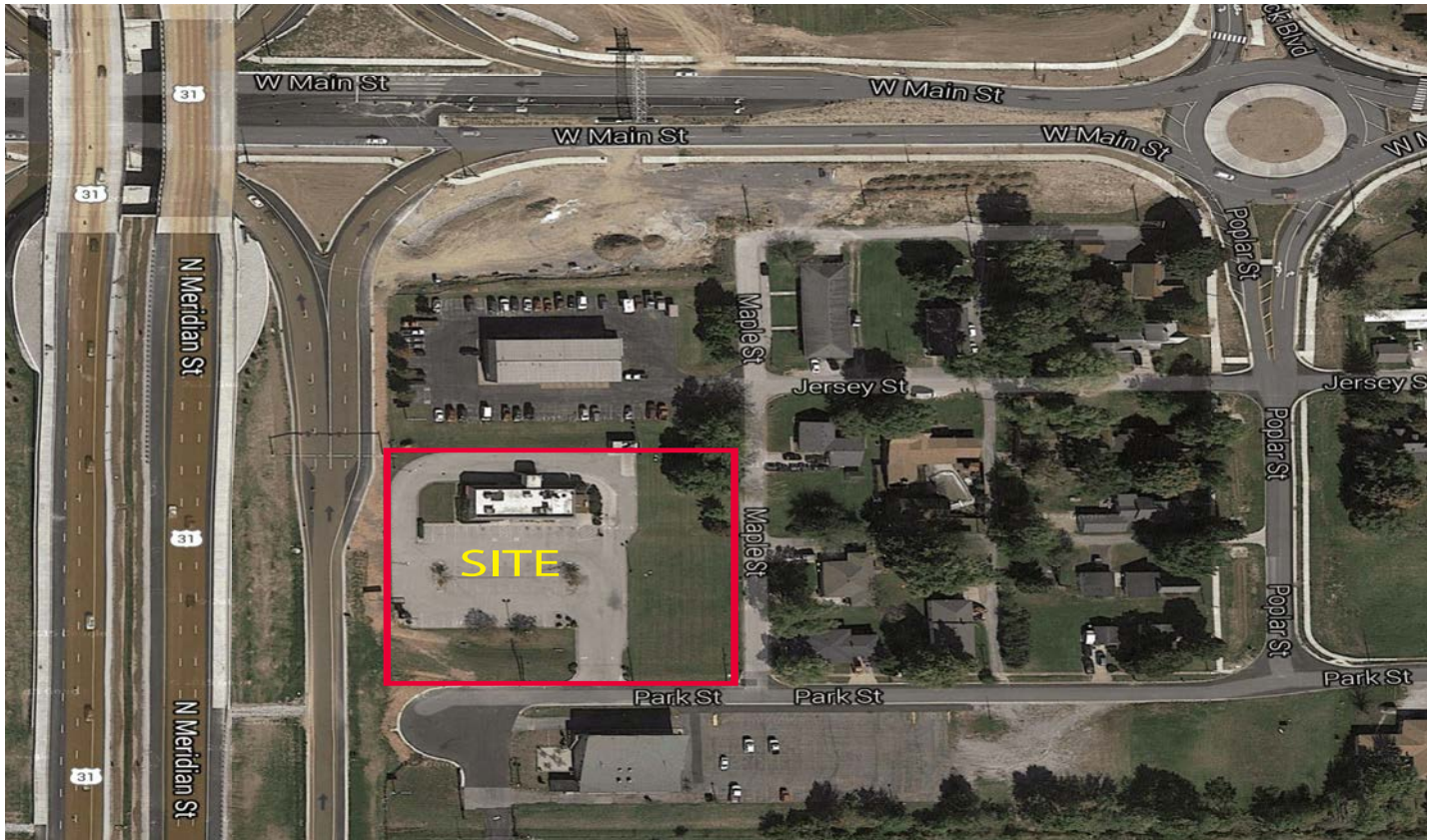
6440 Westfield Blvd., Indianapolis, IN 46220 | ph. (317) 472-1800 - fax (317) 472-1802 | VeritasRealty.com



Westfield Sale Opportunity

1.983 Acres

518 W Park St, Westfield, IN



Grand Park



Grand Junction



For more information contact:

Wayne O'Hara, CLS

317-472-1800

wohara@veritasrealty.com

6440 Westfield Blvd., Indianapolis, IN 46220 | ph. (317) 472-1800 - fax (317) 472-1802 | VeritasRealty.com



VERITAS
REALTY

A MEMBER OF
CHAINLINKS
RETAIL ADVISORS