

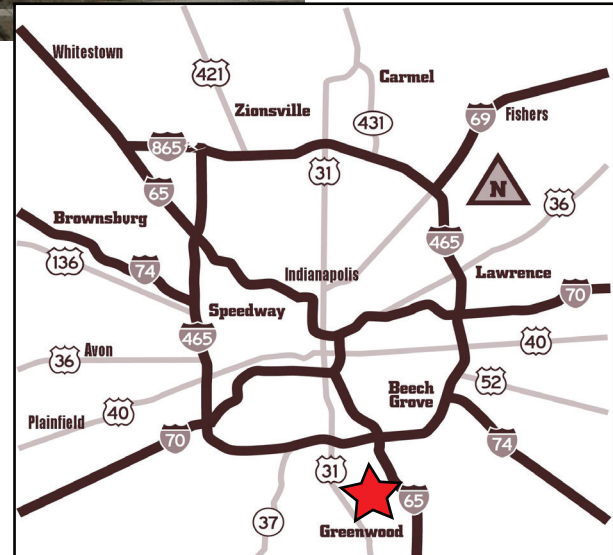
New Construction Small Shops For Lease

8855 S Emerson Ave, Indianapolis, IN 46237



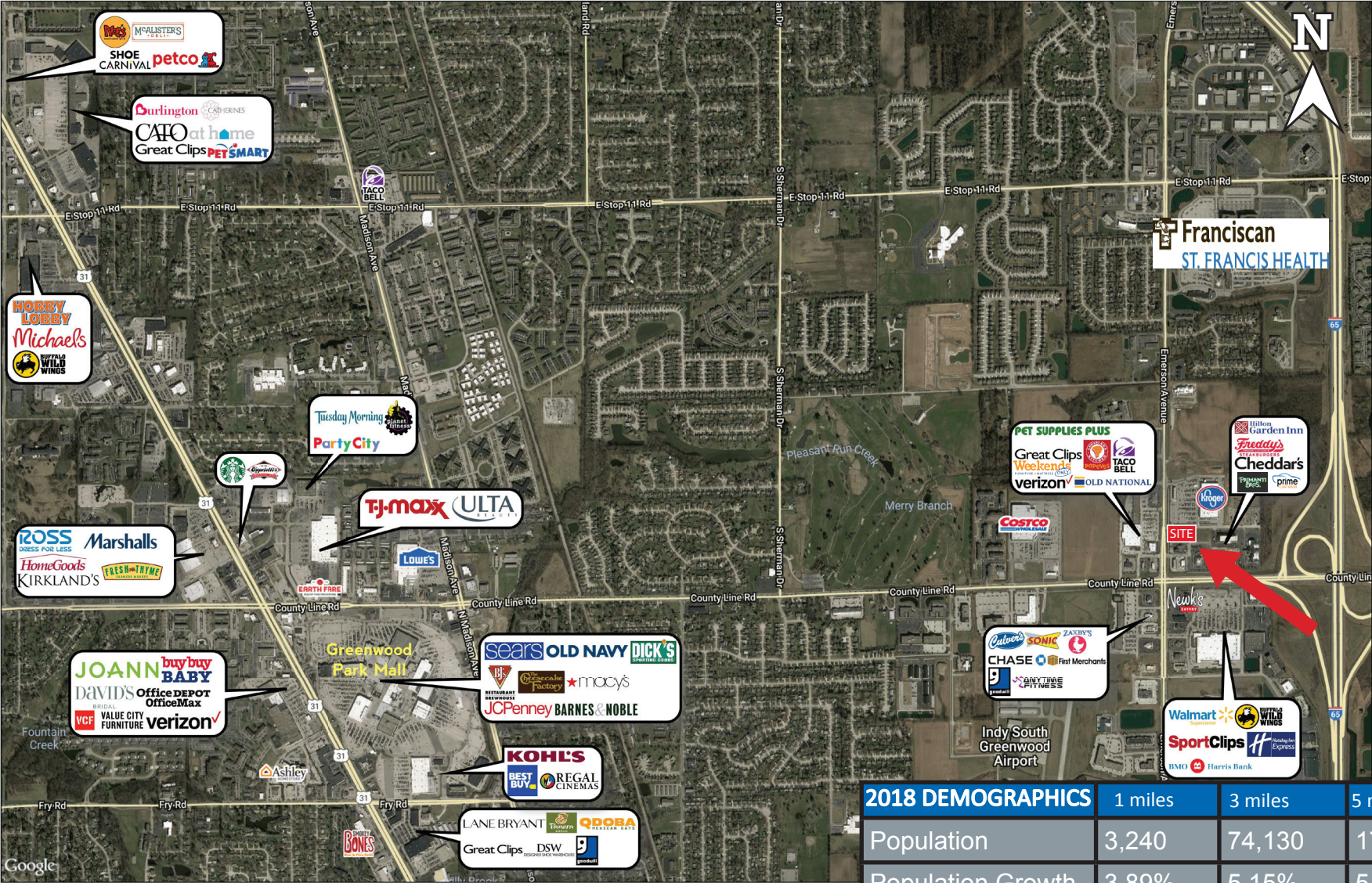
Property Highlights:

- Up to 3,484 SF
- High profile location adjacent to new Kroger Marketplace on Emerson Ave
- Located in the heart of the County Line Road & Emerson Ave retail corridor anchored by Kroger Marketplace, Costco, and Walmart Supercenter
- Located near the Franciscan Health Hospital on Emerson Ave – \$300M Development with 454 Beds
- Easily accessible with close proximity to I-65
- Traffic Counts
 - o Emerson Ave: 24,251 VPD
 - o County Line Road: 31,073 VPD
 - o I-65: 71,257 VPD
- Estimated Delivery December 2019



New Construction Small Shops For Lease

8855 S Emerson Ave, Indianapolis, IN 46237



2018 DEMOGRAPHICS	1 miles	3 miles	5 miles
Population	3,240	74,130	173,691
Population Growth	3.89%	5.15%	5.12%
Avg. HH Income	\$64,627	\$69,326	\$72,185
Daytime Population	10,155	39,672	68,991

FOR MORE INFORMATION
PLEASE CONTACT:

Amy Tharp
T: 317-472-1800
E: Amy@VeritasRealty.com

Andrew Demaree
T: 317-472-1800
E: ADemaree@VeritasRealty.com



New Construction Small Shops For Lease

8855 S Emerson Ave, Indianapolis, IN 46237



FOR MORE INFORMATION
PLEASE CONTACT:

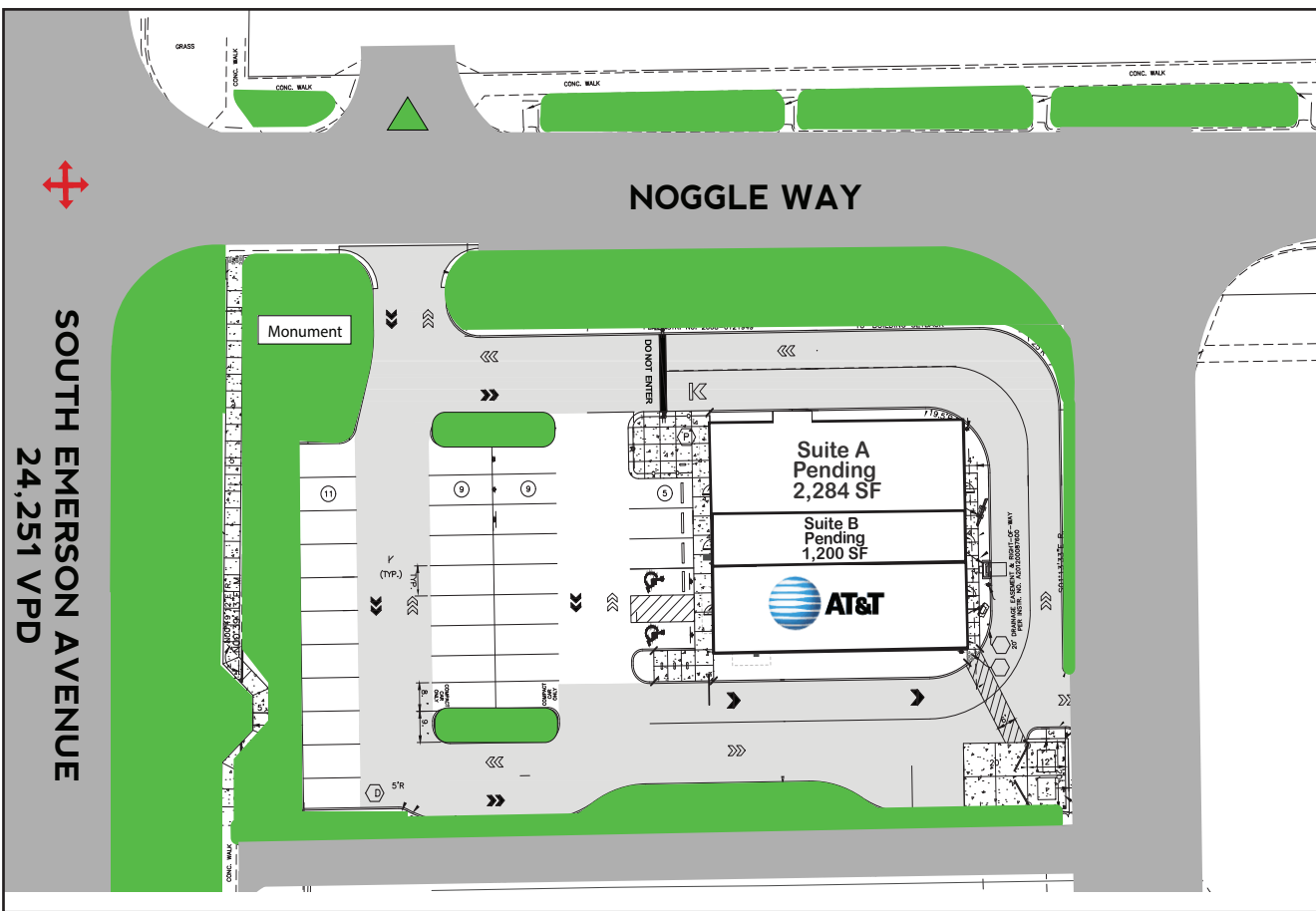
Amy Tharp
T: 317-472-1800
E: Amy@VeritasRealty.com

Andrew Demaree
T: 317-472-1800
E: ADemaree@VeritasRealty.com



New Construction Small Shops For Lease

8855 S Emerson Ave, Indianapolis, IN 46237



Suite	Tenant	Size
A	Pending	2,284 SF
B	Pending	1,200 SF
D	AT&T	2,004 SF
Total GLA:		5,488 SF

FOR MORE INFORMATION
PLEASE CONTACT:

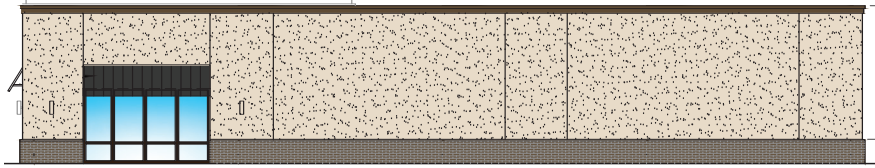
Amy Tharp
T: 317-472-1800
E: Amy@VeritasRealty.com

Andrew Demaree
T: 317-472-1800
E: ADemaree@VeritasRealty.com



New Construction Small Shops For Lease

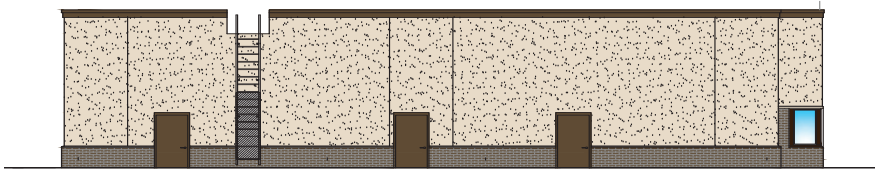
8855 S Emerson Ave, Indianapolis, IN 46237



PRELIMINARY SOUTH ELEVATION

SCALE: 1/8" = 1'-0"

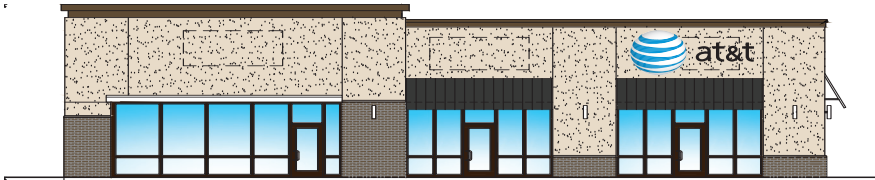
4



PRELIMINARY EAST ELEVATION

SCALE: 1/8" = 1'-0"

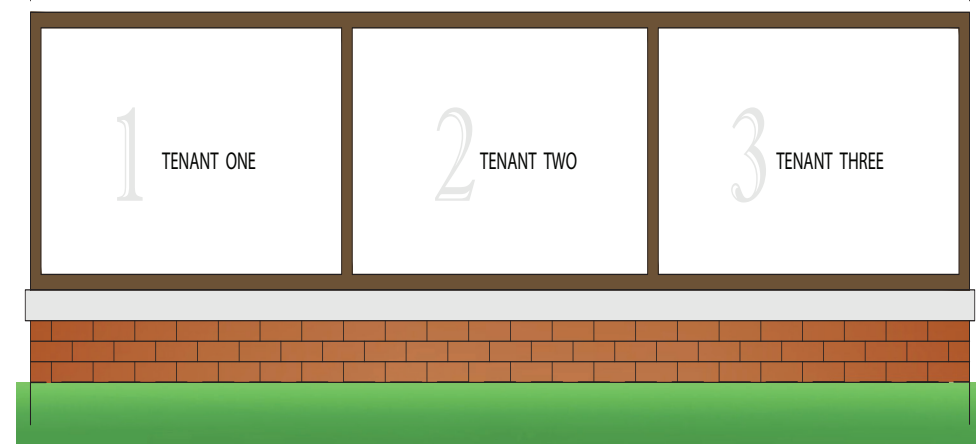
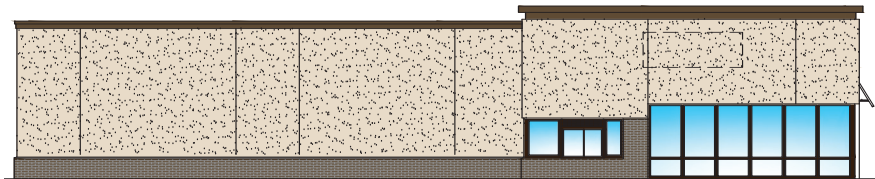
3



PRELIMINARY WEST ELEVATION

SCALE: 1/8" = 1'-0"

2



FOR MORE INFORMATION
PLEASE CONTACT:

Amy Tharp

T: 317-472-1800

E: Amy@VeritasRealty.com

Andrew Demaree

T: 317-472-1800

E: ADemaree@VeritasRealty.com

VR VERITAS
REALTY

ALRIG USA
DEVELOPMENT

A MEMBER OF
CHAINLINKS
RETAIL ADVISORS