

NOW LEASING 6366 GUILFORD AVENUE

NEWLY RENOVATED INSIDE AND OUT

VERITAS
REALTY

PROPERTY HIGHLIGHTS:

- ▀ Recently remodeled exterior
- ▀ Whitebox exterior
- ▀ 24 on-site parking spaces
- ▀ Exterior signage opportunity
- ▀ Outdoor patio possibility
- ▀ Unique lower-level retail potential
- ▀ \$30 PSF full service
- ▀ 8,616 Square Feet

Space AVAILABLE for LEASE in Newly Renovated Building

6366 Guilford Avenue, Indianapolis, IN 46220

CONTACT: Mitch Ostrowski John Holloway
 E: Mitch@VeritasRealty.com E: John@VeritasRealty.com
 T: 281-433-9412 T: 317-472-1800

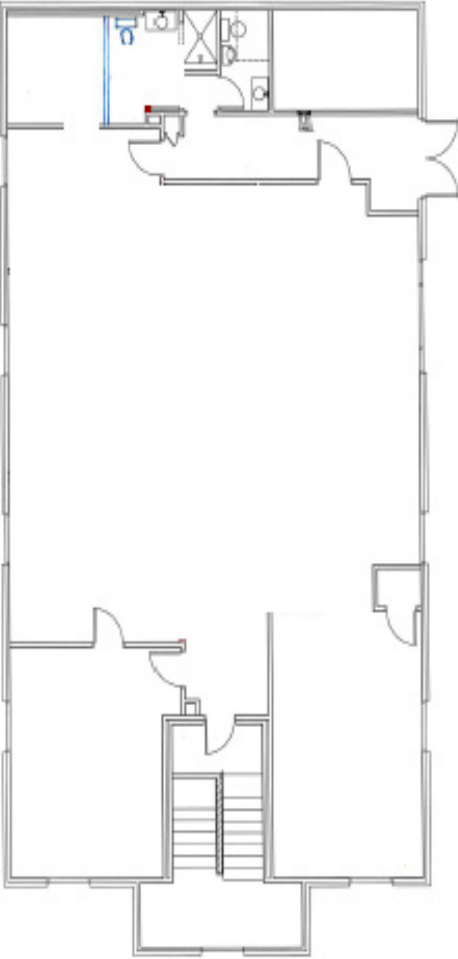


www.VeritasRealty.com

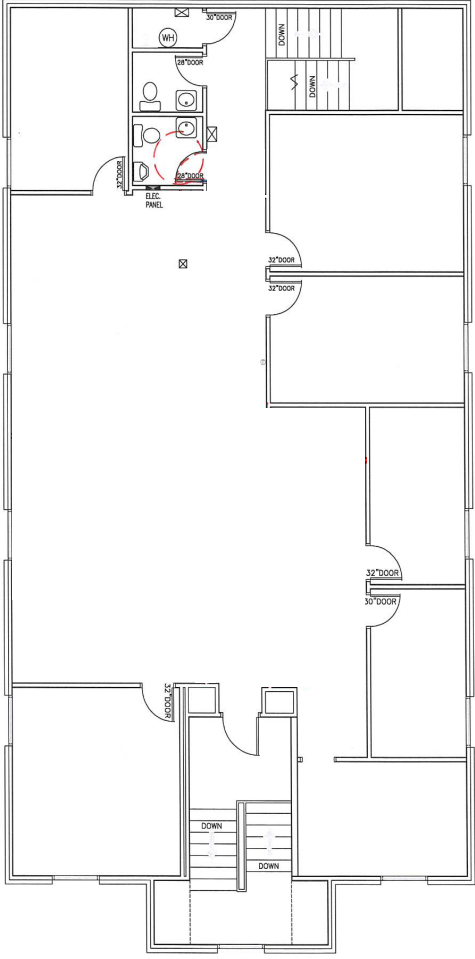
SINGLE AND MULTI-TENANT OPTIONS

8,616 SF AVAILABLE FOR LEASE

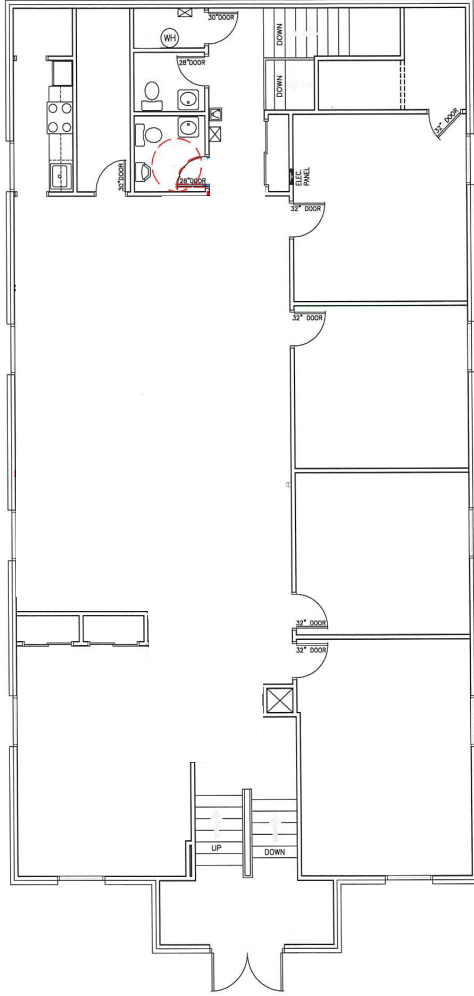
FLOOR PLANS



LOWER LEVEL
2,827 SF



SECOND FLOOR
2,827 SF






FIRST FLOOR
2,827 SF

6366 GUILFORD AVENUE
 8,616 SF AVAILABLE FOR LEASE

SITE
 PHOTOS



DEMOGRAPHICS	 1 MILE	 3 MILE	 5 MILE
Population:	10,357	79,165	216,478
Daytime Pop:	6,480	51,875	192,754
Avg. HH Income:	\$147,491	\$143,981	\$111,964

CONTACT: **Mitch Ostrowski** | T: 281-433-9412 | E: Mitch@VeritasRealty.com
John Holloway | T: 317-472-1800 | E: John@VeritasRealty.com

VERITAS
 REALTY

www.VeritasRealty.com