

Windridge Shops

For Lease | +/- 1,000 SF | Available Immediately

VERITAS
REALTY

5450 Fall Creek Parkway, Indianapolis, IN 46226



Kessler Blvd

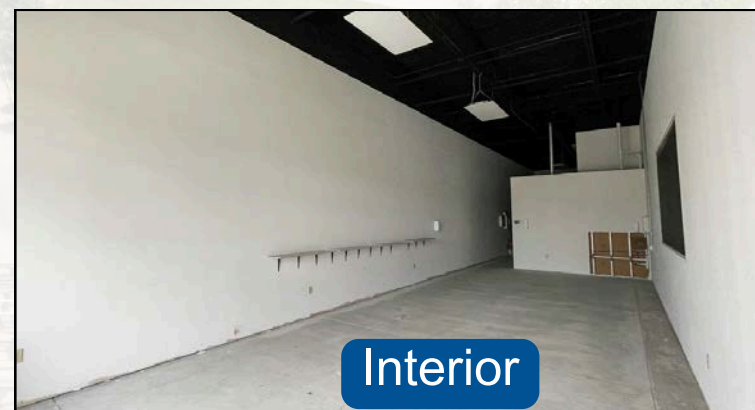
1,000 SF Available

E 56 th St

Emerson Way 14,738 ADT

PROPERTY HIGHLIGHTS:

- +/-1,000 SF former staffing office available immediately
- Located in Indianapolis, Indiana with over 229,042 people living within a 5 mile radius and average household incomes over \$83,563
- Center is positioned off the intersection of E 56th Street & Kessler Boulevard with access from Emerson Way
- Corridor includes Walmart Neighborhood Market, Starbucks, Subway, CVS, Cathedral High School and more...



Interior

FOR LEASE

CONTACT:

John Holloway

317-472-1800

John@VeritasRealty.com

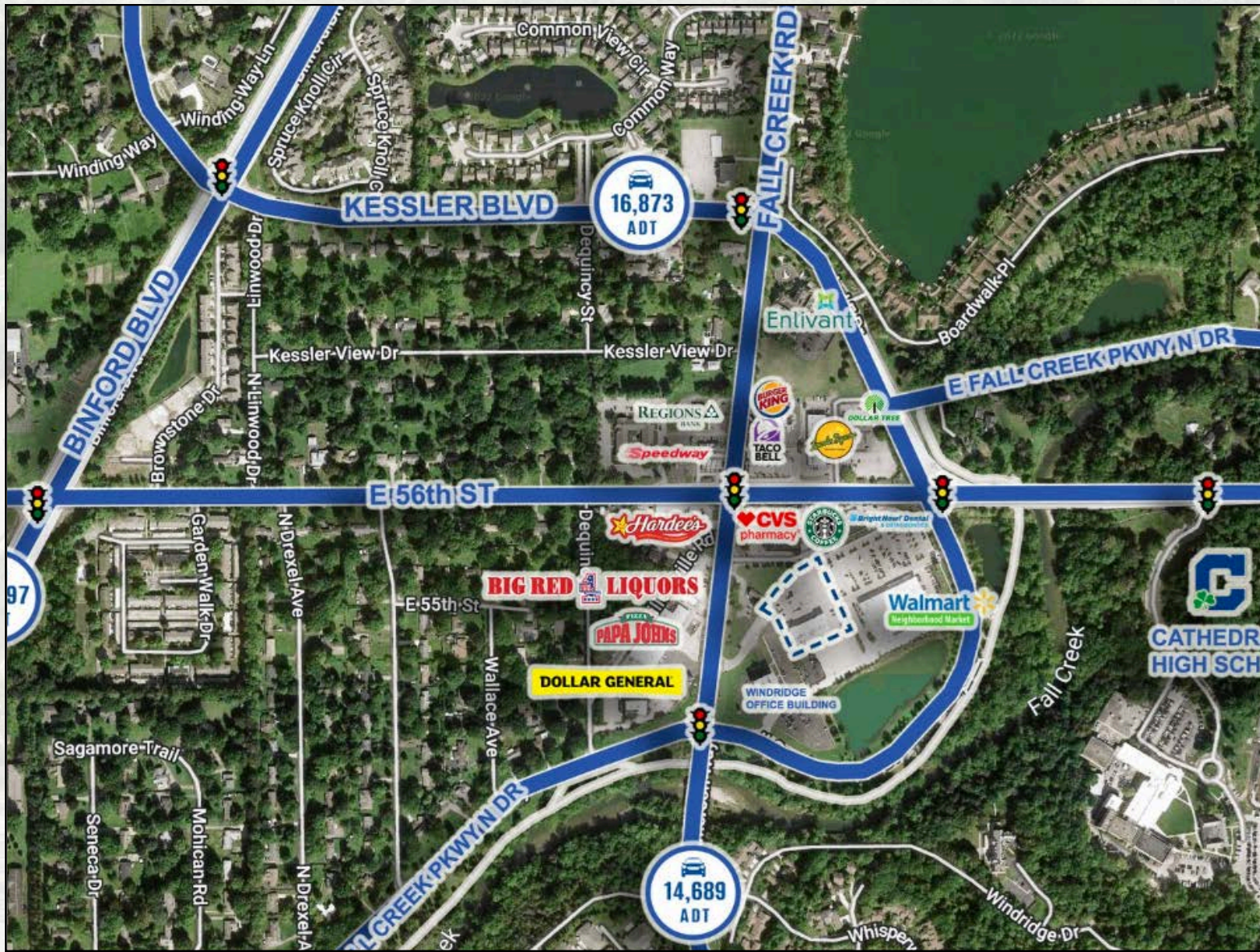
www.VeritasRealty.com

Windridge Shops

For Lease | +/- 1,000 SF | Available Immediately

VERITAS
REALTY

5450 Fall Creek Parkway, Indianapolis, IN 46226



FOR LEASE

CONTACT:

John Holloway
317-472-1800
John@VeritasRealty.com

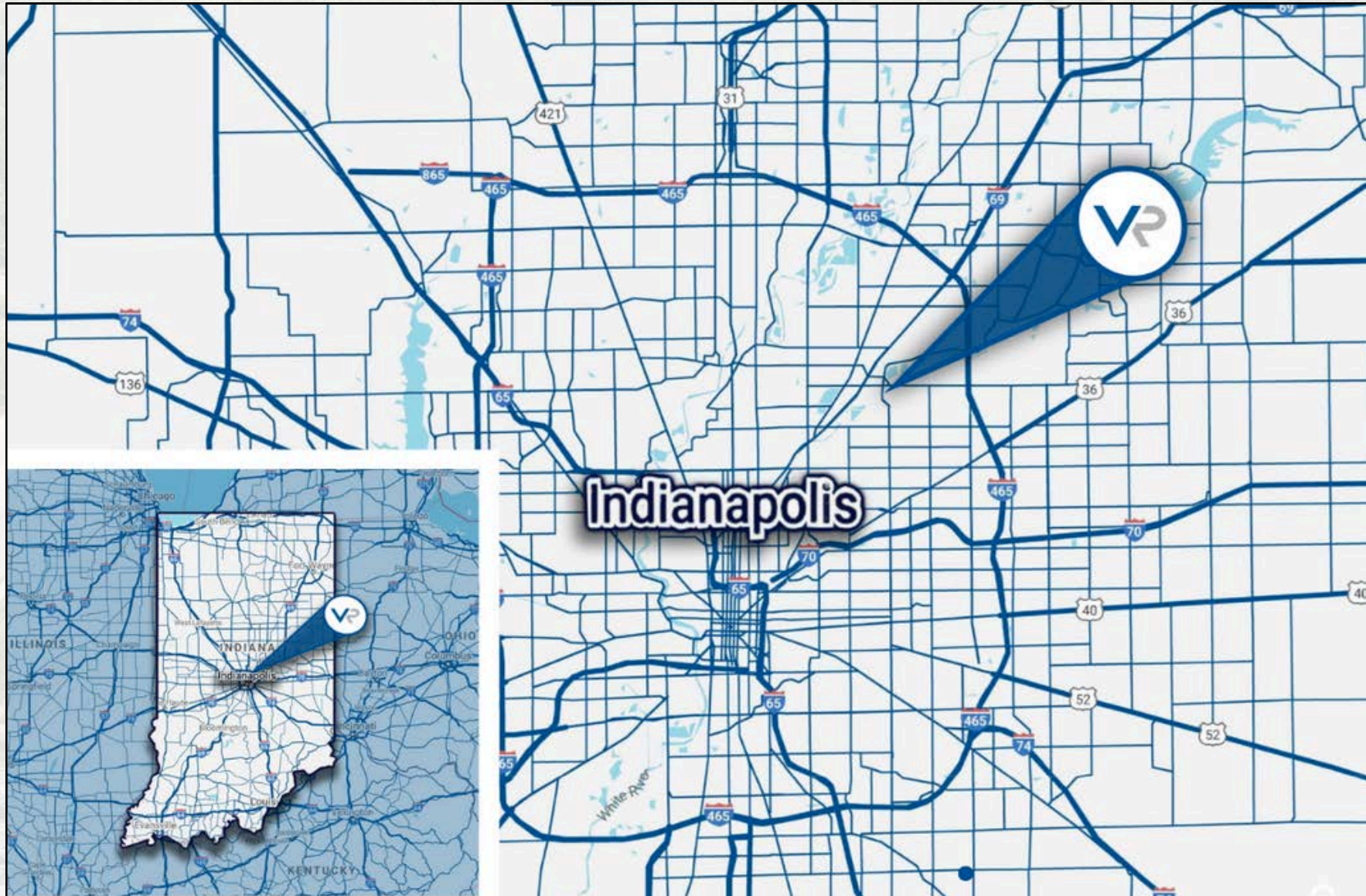
www.VeritasRealty.com

Windridge Shops

For Lease | +/- 1,000 SF | Available Immediately

VERITAS
REALTY

5450 Fall Creek Parkway, Indianapolis, IN 46226



FOR LEASE

CONTACT:

John Holloway

317-472-1800

John@VeritasRealty.com

www.VeritasRealty.com

Windridge Shops

For Lease | +/- 1,000 SF | Available Immediately

VERITAS
REALTY

5450 Fall Creek Parkway, Indianapolis, IN 46226



1,000 SF Available

FOR LEASE

CONTACT:

John Holloway

317-472-1800

John@VeritasRealty.com

www.VeritasRealty.com

Windridge Shops

For Lease | +/- 1,000 SF | Available Immediately

VERITAS
REALTY

5450 Fall Creek Parkway, Indianapolis, IN 46226



CONTACT:

John Holloway
317-472-1800
John@VeritasRealty.com

FOR LEASE

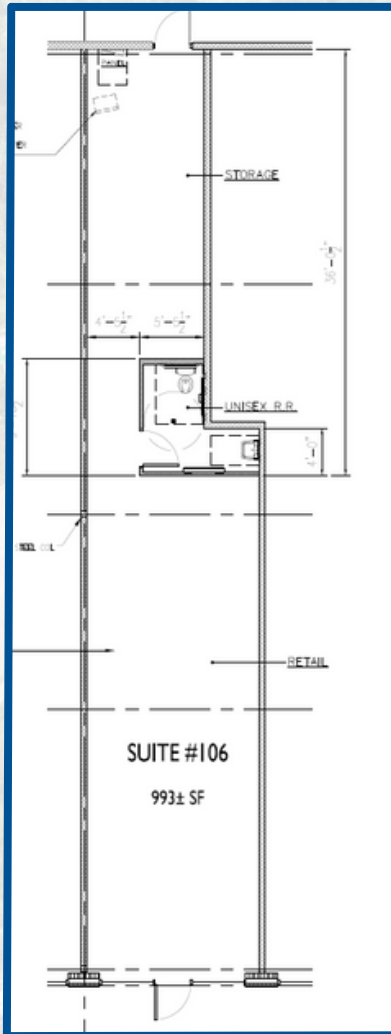
www.VeritasRealty.com

Windridge Shops

For Lease | +/- 1,000 SF | Available Immediately

VERITAS
REALTY

5450 Fall Creek Parkway, Indianapolis, IN 46226



FOR LEASE

CONTACT:

John Holloway

317-472-1800

John@VeritasRealty.com

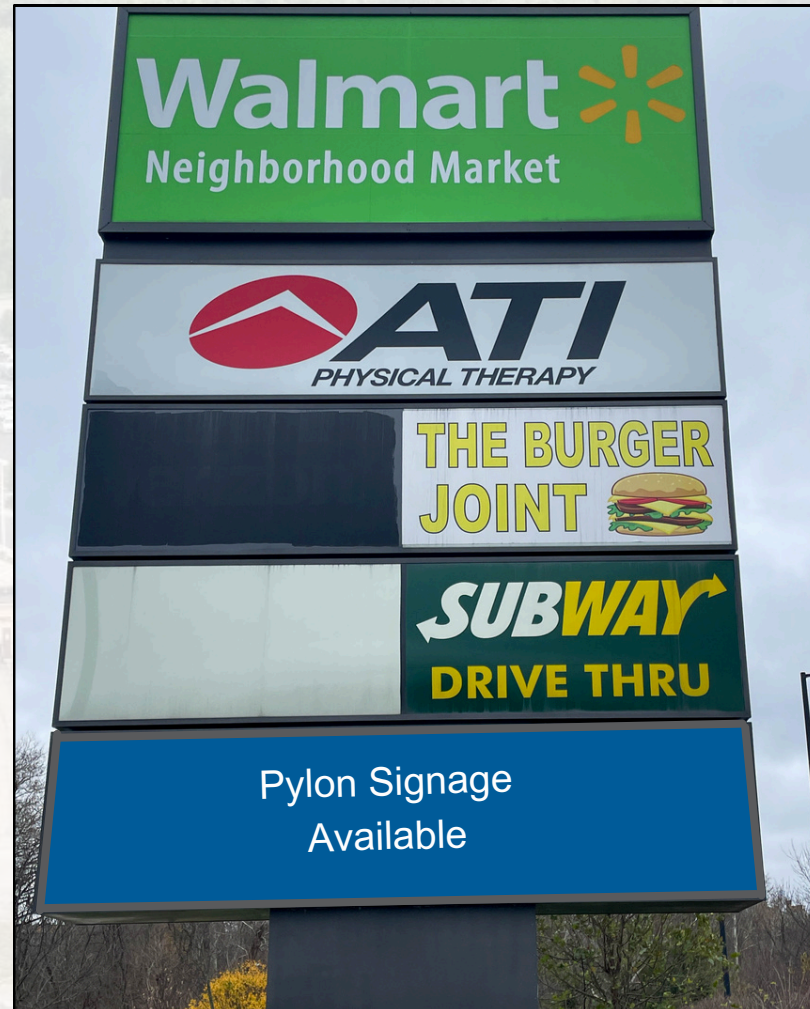
www.VeritasRealty.com

Windridge Shops

For Lease | +/- 1,000 SF | Available Immediately

VERITAS
REALTY

5450 Fall Creek Parkway, Indianapolis, IN 46226



FOR LEASE

CONTACT:

John Holloway

317-472-1800

John@VeritasRealty.com

www.VeritasRealty.com